

# For Lease

## 40 Parkway Drive

SLEMON PARK, PRINCE EDWARD ISLAND, CANADA



**ENHANCE YOUR BUSINESS POTENTIAL IN PRINCE EDWARD ISLAND.**



This multi-use, multi-tenant facility is centrally located at Slemon Park on a major thoroughfare. The large former industrial training facility has approximately 15,000 square feet of shop, classroom and administration space currently available. The property is

located within easy access (within 300 metres) of Slemon Park Hotel & Conference Centre, Anson's Restaurant & Pub, and Slemon Park's residential community. The building is ideal for training, component repair, and general manufacturing.

# Photos

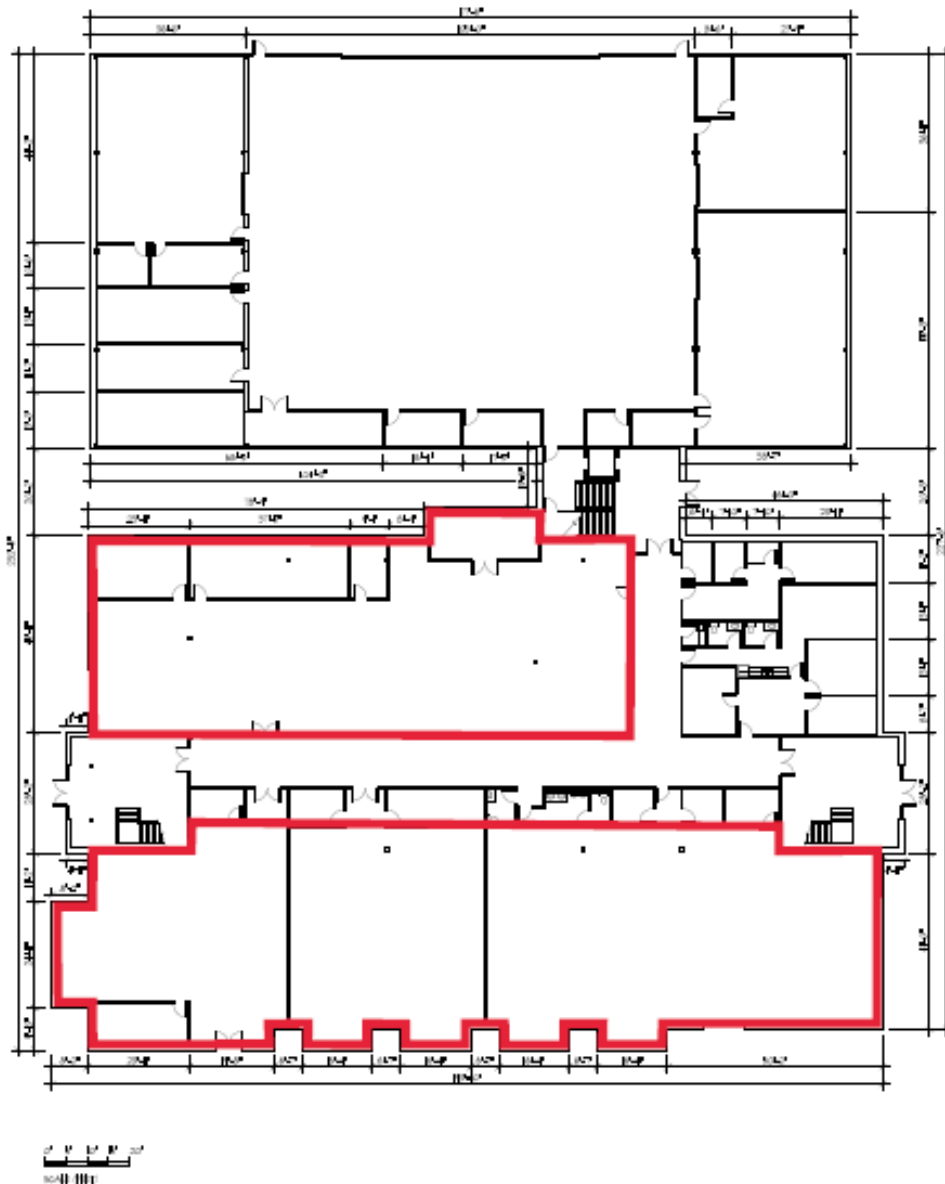
40 PARKWAY DRIVE | SLEMON PARK, PRINCE EDWARD ISLAND, CANADA





# Building Layout

40 PARKWAY DRIVE | SLEMON PARK, PRINCE EDWARD ISLAND, CANADA



The red areas denote space available for lease.

## Features

- 15,000 sq. ft. of available space
- 8-10 ft. Ceilings
- Shipping/receiving doors
- Ample parking
- 3 Phase power, 600 amp/600 volt
- Oil heat – in floor
- High speed fiber available
- Sprinkler system
- Security system
- Short walk to Accommodations, Food Services and Summerside Airport ramp/FBO

# Location

40 PARKWAY DRIVE | SLEMON PARK, PRINCE EDWARD ISLAND, CANADA



Located on the East Coast of Canada, Slemon Park is easily accessible from major highways and is less than 7 minutes from the City of Summerside, less than an hour from the capital city of Charlottetown as well as just 30 minutes from the Confederation Bridge. Slemon Park is the focal point of Prince Edward Island's globally competitive manufacturing

and aerospace industries and is regarded as a well-established training hub. Slemon Park is a thriving community with access to an on-site residential community, hotel, conference centre, food services and private airport. These commercial, residential, hospitality and lifestyle amenities combine to make Slemon Park an easy and convenient place to do business.

**Shawn McCarvill**  
President

**Tel:** 902-432-1704  
**Cell:** 902-439-0841

[smccarvill@slemonpark.com](mailto:smccarvill@slemonpark.com)  
[www.slemonpark.com](http://www.slemonpark.com)