

For Lease

40 Aerospace Boulevard

SLEMON PARK, PRINCE EDWARD ISLAND, CANADA



ENHANCE YOUR BUSINESS POTENTIAL IN PRINCE EDWARD ISLAND.



This property is located in the central portion of Slemon Park beside the Summerside Airport runway and Fixed Base Operations (FBO). It is a large standalone hangar of approximately 53,000 square feet with hangar, shop, classroom and administration

space. This multi-use, multi-tenant facility also has direct access to significant aprons and plane storage areas. The building is ideal for strip and paint, deep maintenance, plane/component storage & general manufacturing.

Photos

40 AEROSPACE BLVD | SLEMON PARK, PRINCE EDWARD ISLAND, CANADA

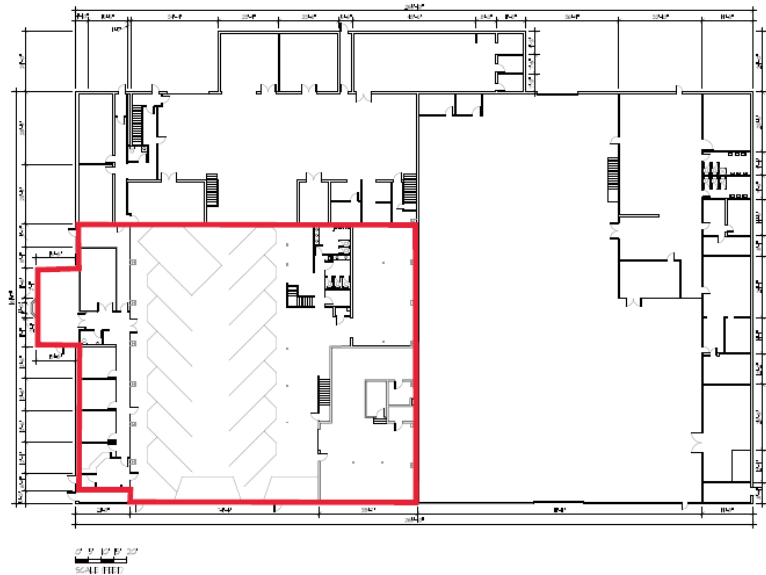


Building Layout

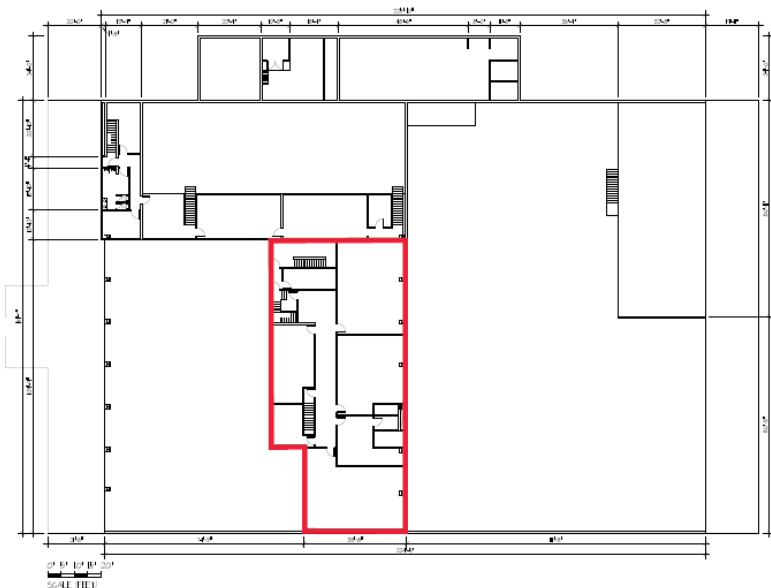
40 AEROSPACE BLVD | SLEMON PARK, PRINCE EDWARD ISLAND, CANADA



FIRST FLOOR



SECOND FLOOR



The red areas denote space available for lease.

Features

- 20,000 sq. ft. of available admin/shop/classroom space
- 8-20 ft. Ceilings
- Airport, taxiway, apron access
- Overhead doors
- Ample parking
- 3 Phase power, 800 amp/600 volt
- Oil heat
- High speed fiber available
- Sprinkler system
- Short walk to Accommodations, Food Services and Summerside Airport ramp/FBO

Location

40 AEROSPACE BLVD | SLEMON PARK, PRINCE EDWARD ISLAND, CANADA



Located on the East Coast of Canada, Slemon Park is easily accessible from major highways and is less than 7 minutes from the City of Summerside, less than an hour from the capital city of Charlottetown as well as just 30 minutes from the Confederation Bridge. Slemon Park is the focal point of Prince Edward Island's globally competitive manufacturing

and aerospace industries and is regarded as a well-established training hub. Slemon Park is a thriving community with access to an on-site residential community, hotel, conference centre, food services and private airport. These commercial, residential, hospitality and lifestyle amenities combine to make Slemon Park an easy and convenient place to do business.

Shawn McCarvill
President

Tel: 902-432-1704
Cell: 902-439-0841

smccarvill@slemonpark.com
www.slemonpark.com