

For Lease

30 Aerospace Boulevard

SLEMON PARK, PRINCE EDWARD ISLAND, CANADA



ENHANCE YOUR BUSINESS POTENTIAL IN PRINCE EDWARD ISLAND.



This property is located directly beside the Summerside Airport runway and is home to the airport's fixed base operation (FBO). This administration, office and classroom space has approximately 600 square feet on the ground floor adjunction to the FBO, and 10,400

square feet of office/classroom space on the second storey. This multi-use, multi-tenant facility is ideal for aviation training or administration endeavours. For those with an interest in aviation, you can't get any closer to the airfield.

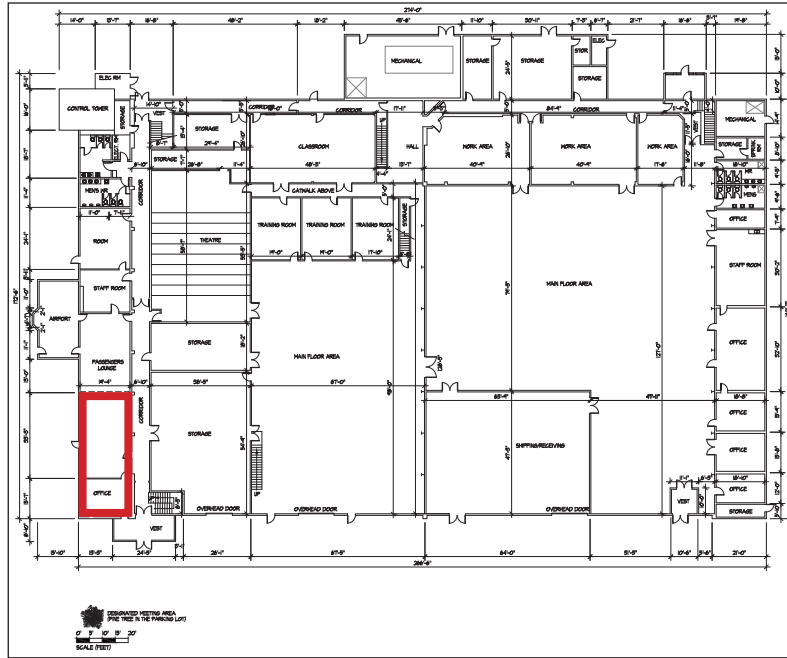
Photos

30 AEROSPACE BLVD | SLEMON PARK, PRINCE EDWARD ISLAND, CANADA

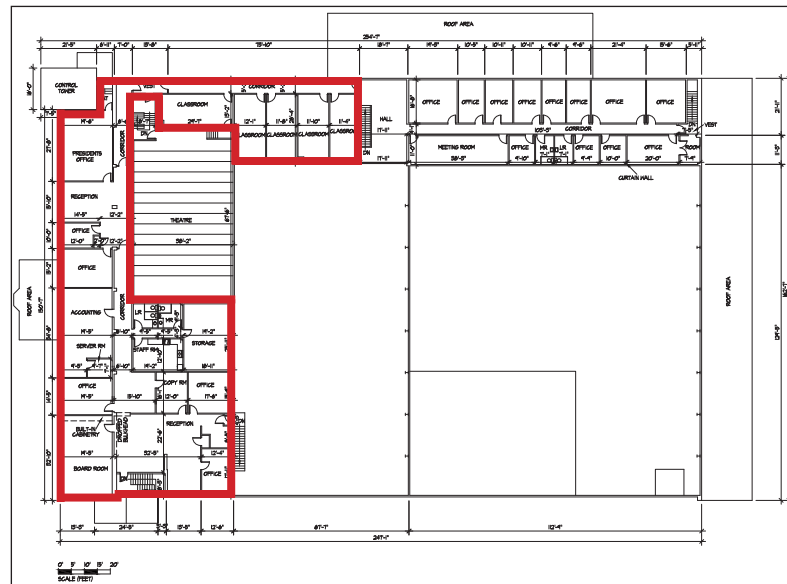


Building Layout

30 AEROSPACE BLVD | SLEMON PARK, PRINCE EDWARD ISLAND, CANADA



FIRST FLOOR



SECOND FLOOR

The red areas denote space available for lease.

Features

- 11,000 sq. ft. of available office/classroom space
- 8-20 ft. Ceilings
- Airport, taxiway, apron access
- Ample parking
- 3 Phase power, 600 amp/600 volt
- Heated
- Climate controlled
- High speed fiber available
- Negotiable inclusion of furniture
- Short walk to Accommodations, Food Services and Summerside Airport ramp/FBO

Location

30 AEROSPACE BLVD | SLEMON PARK, PRINCE EDWARD ISLAND, CANADA



Located on the East Coast of Canada, Slemon Park is easily accessible from major highways and is less than 7 minutes from the City of Summerside, less than an hour from the capital city of Charlottetown as well as just 30 minutes from the Confederation Bridge. Slemon Park is the focal point of Prince Edward Island's globally competitive manufacturing

and aerospace industries and is regarded as a well-established training hub. Slemon Park is a thriving community with access to an on-site residential community, hotel, conference centre, food services and private airport. These commercial, residential, hospitality and lifestyle amenities combine to make Slemon Park an easy and convenient place to do business.

Shawn McCarvill
President

Tel: 902-432-1704
Cell: 902-439-0841

smccarvill@slemonpark.com
www.slemonpark.com