

For Lease

70 Aerospace Boulevard

SLEMON PARK, PRINCE EDWARD ISLAND, CANADA



ENHANCE YOUR BUSINESS POTENTIAL IN PRINCE EDWARD ISLAND.



Centrally located within Slemon Park, this property is in close proximity to reputable, long-term Slemon Park commercial tenants. Formerly a firehall, this building has excellent potential to host a variety of business operations. Three large overhead doors on each side of the building and a central open

bay area with 20 foot ceilings provide a flexible manufacturing facility. A smaller overhead door on one side is ideal for shipping/receiving. Slemon Park Corporation is prepared to carry out any necessary renovations prior to occupancy.

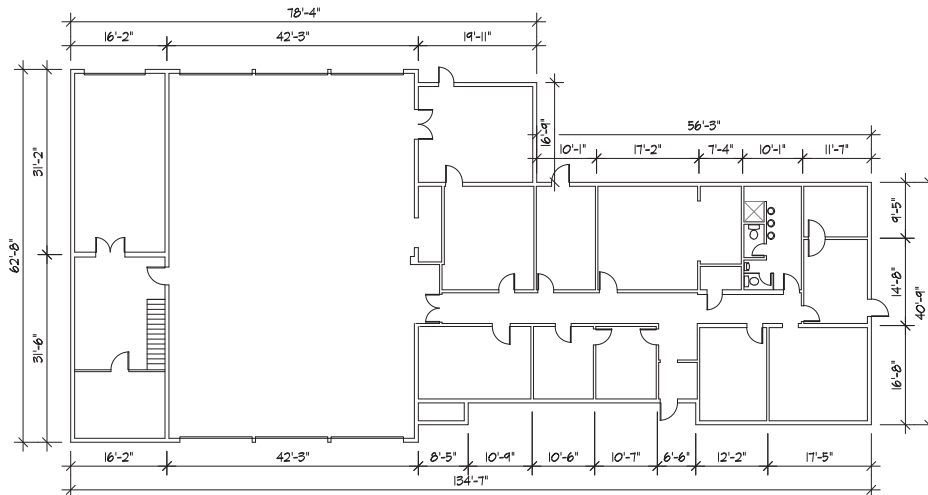
Photos

70 AEROSPACE BLVD | SLEMON PARK, PRINCE EDWARD ISLAND, CANADA

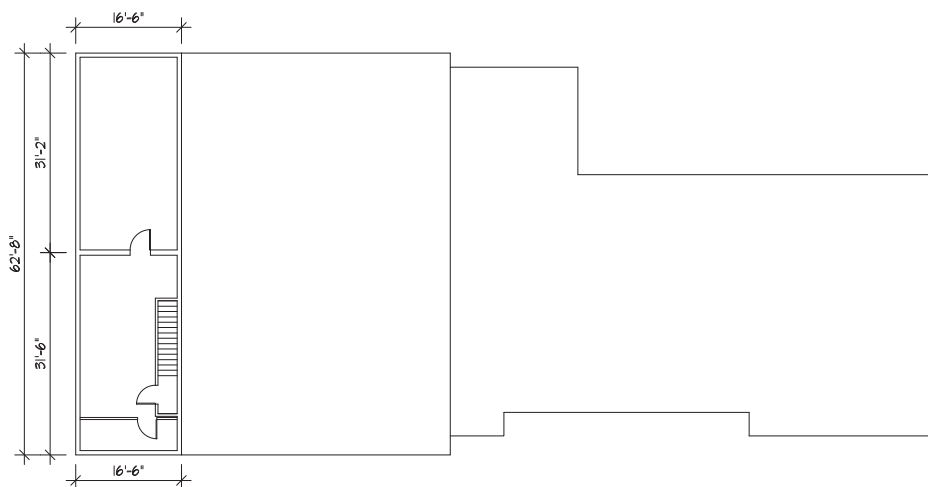


Building Layout

70 AEROSPACE BLVD | SLEMON PARK, PRINCE EDWARD ISLAND, CANADA



FIRST FLOOR



SECOND FLOOR

Features

- 8,000 sq. ft. of available commercial space
- 3,300 sq. ft. of available admin/office space
- 20 ft. Ceilings
- Overhead doors (7)
- Ample parking
- 3 Phase power, 600amp/600 volt
- Short walk to Accommodations, Food Services and Summerside Airport ramp/FBO

Location

70 AEROSPACE BLVD | SLEMON PARK, PRINCE EDWARD ISLAND, CANADA



Located on the East Coast of Canada, Slemon Park is easily accessible from major highways and is less than 7 minutes from the City of Summerside, less than an hour from the capital city of Charlottetown as well as just 30 minutes from the Confederation Bridge. Slemon Park is the focal point of Prince Edward Island's globally competitive manufacturing

and aerospace industries and is regarded as a well-established training hub. Slemon Park is a thriving community with access to an on-site residential community, hotel, conference centre, food services and private airport. These commercial, residential, hospitality and lifestyle amenities combine to make Slemon Park an easy and convenient place to do business.

Allan Smith
VP, Business Development

Tel: 902-432-1710
Cell: 902-388-5800

asmith@slemonpark.com
www.slemonpark.com