



SLEMON PARK  
CORPORATION

# AVAILABLE SPACE

Hangar 10, 1000 Aerospace Boulevard  
Slemon Park, Prince Edward Island, Canada

## Concept Drawing Only

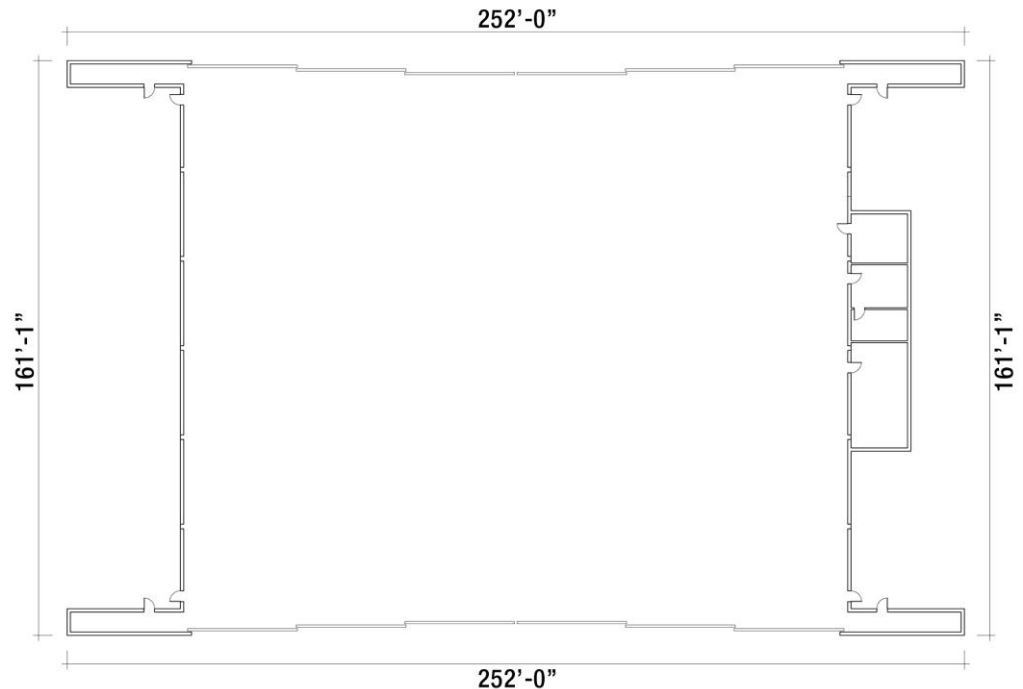


## Actual Exterior



- **TOTAL HANGAR COMMERCIAL SPACE IS APPROX. 29,000 SQ.FT.**
- 5.5 acre lot, steel post & truss structure
- Hangar door opening is 126 feet
- Access to airport ramp with uncongested airspace
- Available Hangar floor space measures approximately 187 feet wide x 154 feet long with peak ceiling height of 38 feet.
- Building has three-phase power 400amp/600 volt, easily upgradable
- Water/sewage services
- Potential tail height of 35 feet

- High speed fibre optic service available
- Lighting System – high bay 250 watt
- Ample parking
- Easy access to highway



FOR FURTHER INFORMATION, PLEASE CONTACT:

Larry Gaudet, Director of Marketing & Development  
Phone: (902) 432-1716, Fax: (902) 888-3078

Email: [lgaudet@slemonpark.com](mailto:lgaudet@slemonpark.com) Website: [www.slemonpark.com](http://www.slemonpark.com)